

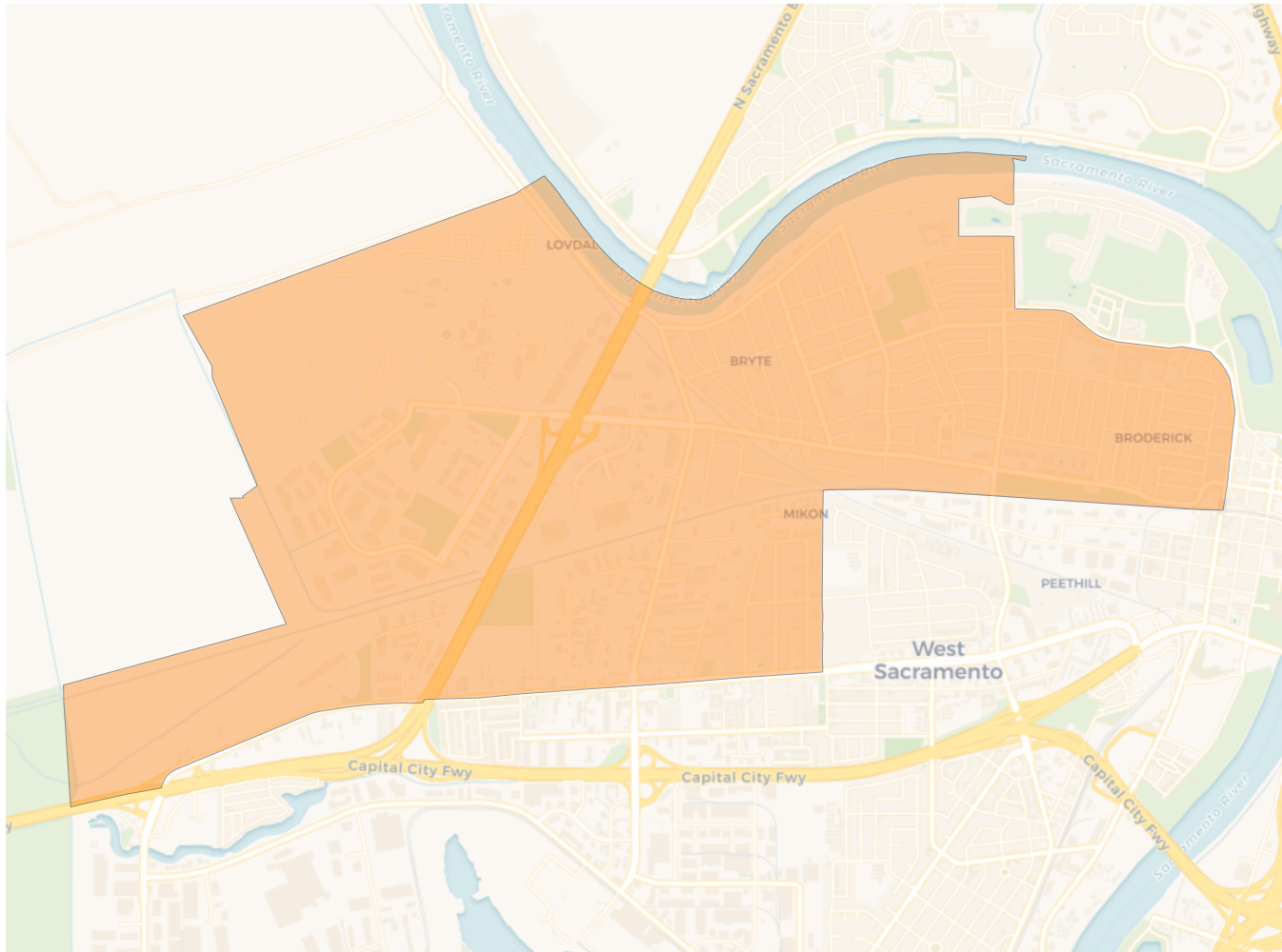
2020 Census

	1	2	3	4
Population	13,484	13,888	14,005	12,700
Deviation	-35	369	486	-819
Deviation %	-0.3%	2.7%	3.6%	-6.1%
Other	5,687	7,029	7,134	7,236
Other %	42.2%	50.6%	50.9%	57.0%
Latino	6,377	4,679	3,426	2,842
Latino %	47.3%	33.7%	24.5%	22.4%
Asian	961	1,457	2,523	2,203
Asian %	7.1%	10.5%	18.0%	17.3%
Black	459	723	922	419
Black %	3.4%	5.2%	6.6%	3.3%

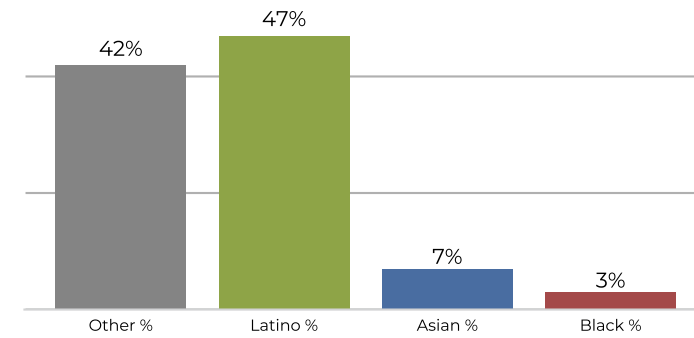
Citizen Voting Age Population (CVAP)

	1	2	3	4
Total CVAP	7,794	8,600	8,722	8,428
Other CVAP	4,098	5,339	5,368	5,844
Other CVAP %	52.6%	62.1%	61.5%	69.3%
Latino CVAP	2,456	2,135	1,521	1,033
Latino CVAP %	31.5%	24.8%	17.4%	12.3%
Asian CVAP	663	490	1,190	1,337
Asian CVAP %	8.5%	5.7%	13.6%	15.9%
Black CVAP	577	636	643	214
Black CVAP %	7.4%	7.4%	7.4%	2.5%

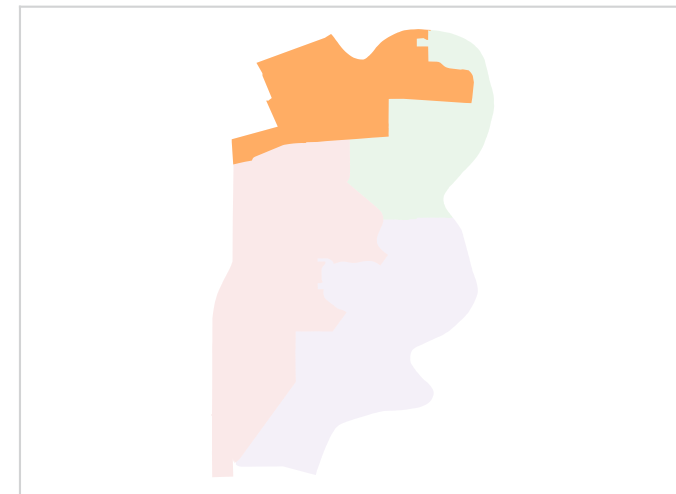
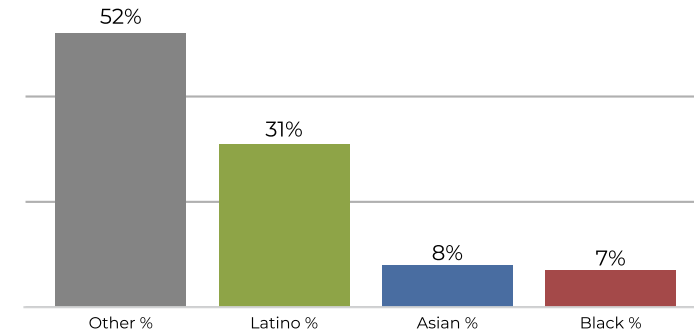
District 1



2020 Census

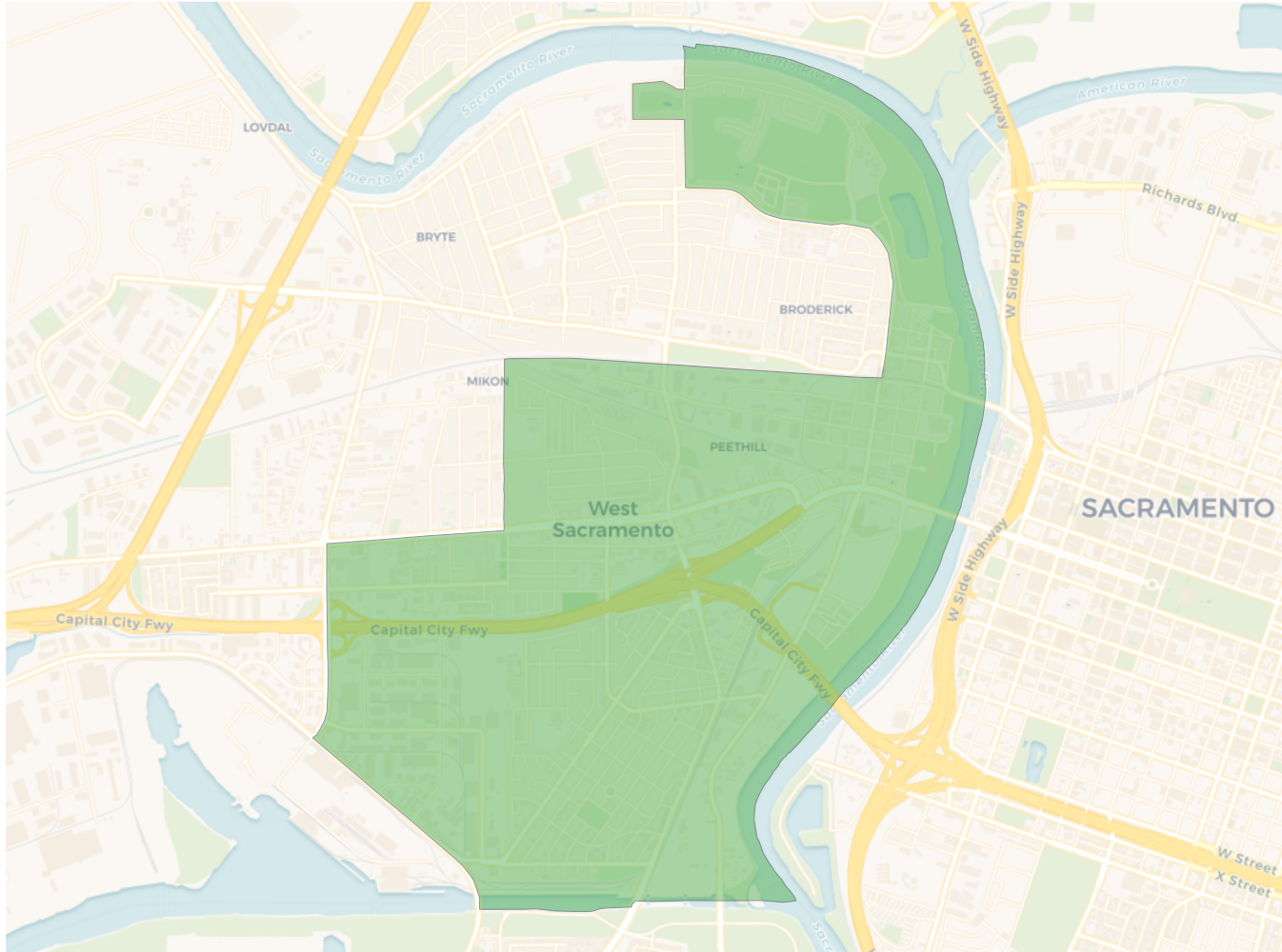


Citizen Voting Age Population

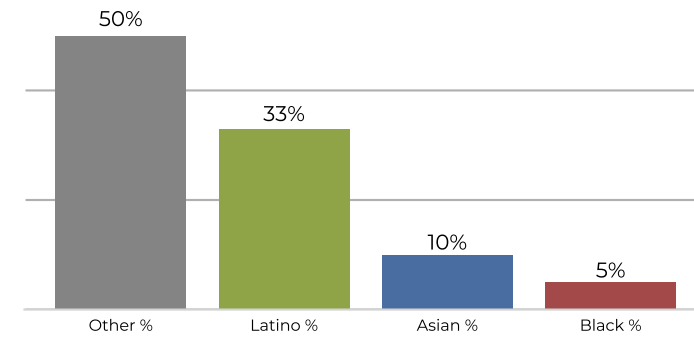


Population	Deviation	Deviation %	Other	Other %	Latino	Latino %	Asian	Asian %	Black	Black %
13,484	-35	-0.3%	5,687	42.2%	6,377	47.3%	961	7.1%	459	3.4%
Total CVAP	Other CVAP	Other CVAP %	Latino CVAP	Latino CVAP %	Asian CVAP	Asian CVAP %	Black CVAP	Black CVAP %		
7,794	4,098	52.6%	2,456	31.5%	663	8.5%	577	7.4%		

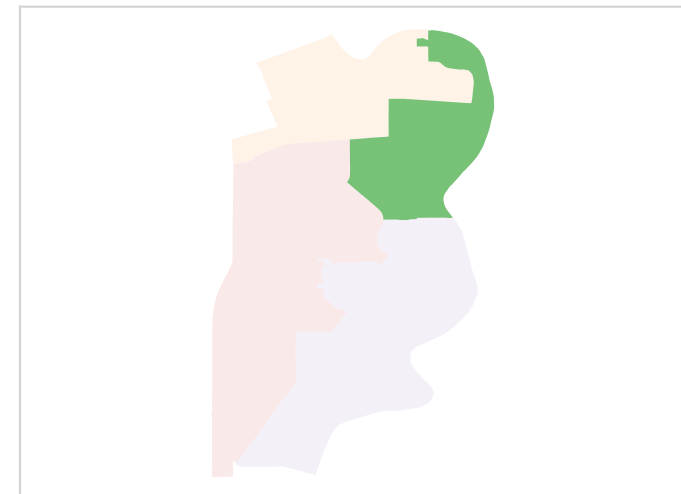
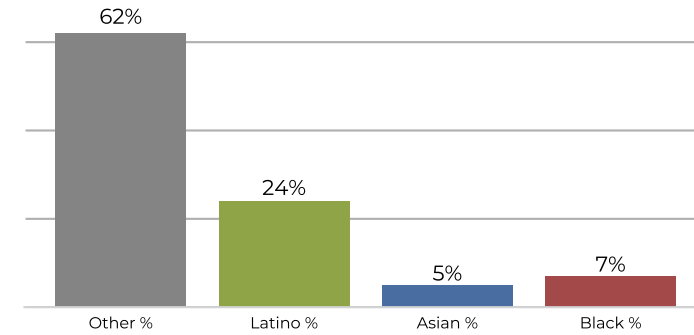
District 2



2020 Census

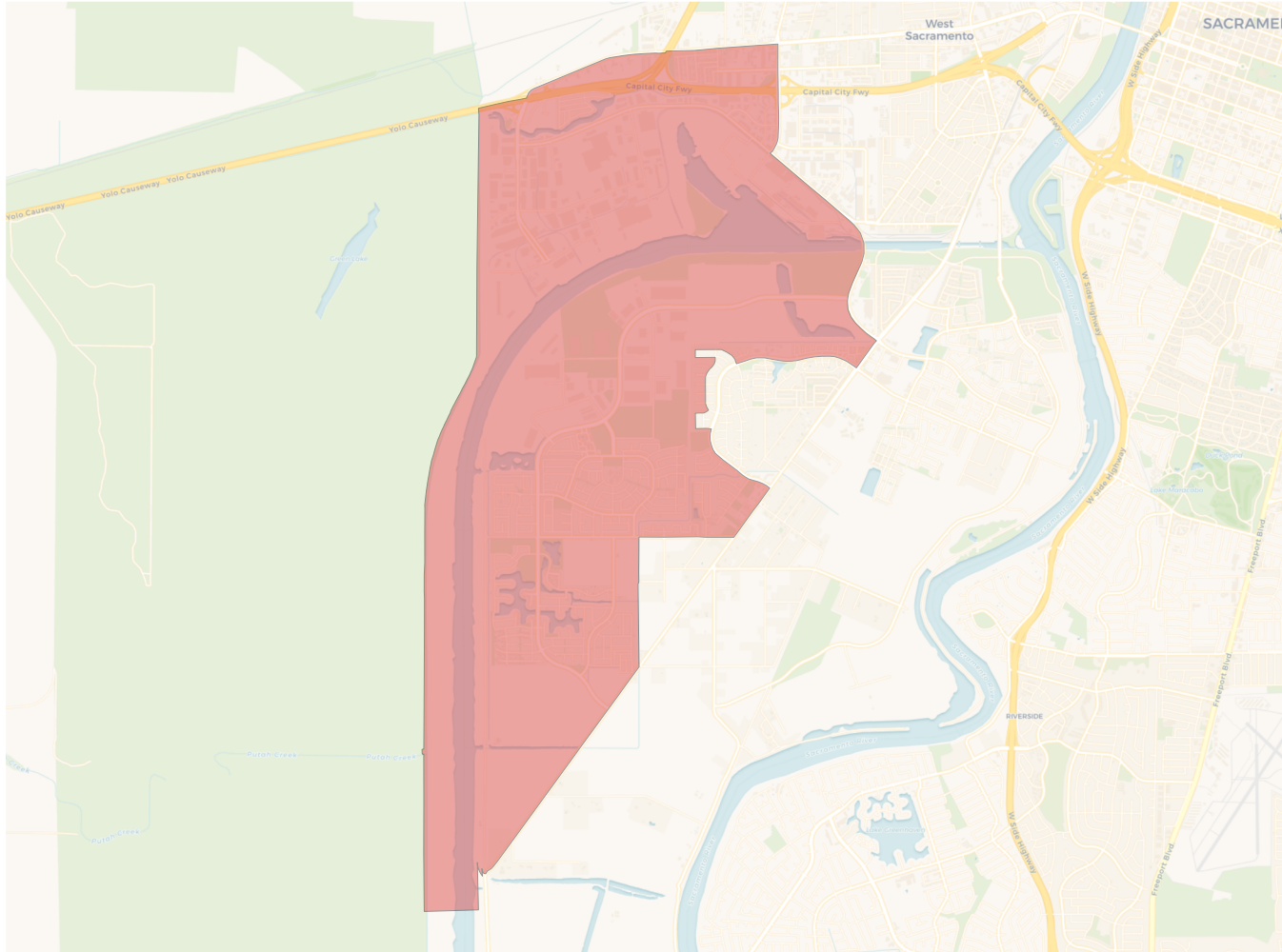


Citizen Voting Age Population

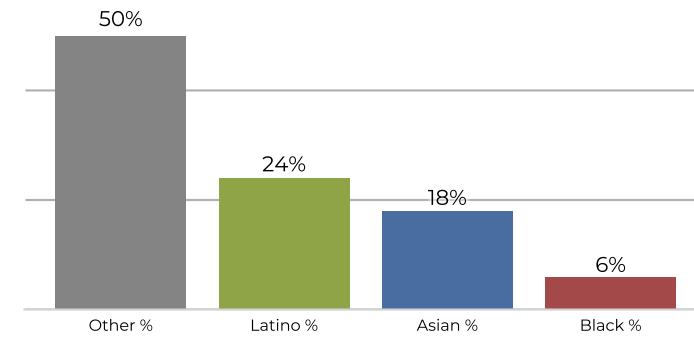


Population	Deviation	Deviation %	Other	Other %	Latino	Latino %	Asian	Asian %	Black	Black %
13,888	369	2.7%	7,029	50.6%	4,679	33.7%	1,457	10.5%	723	5.2%
Total CVAP	Other CVAP	Other CVAP %	Latino CVAP	Latino CVAP %	Asian CVAP	Asian CVAP %	Black CVAP	Black CVAP %		
8,600	5,339	62.1%	2,135	24.8%	490	5.7%	636	7.4%		

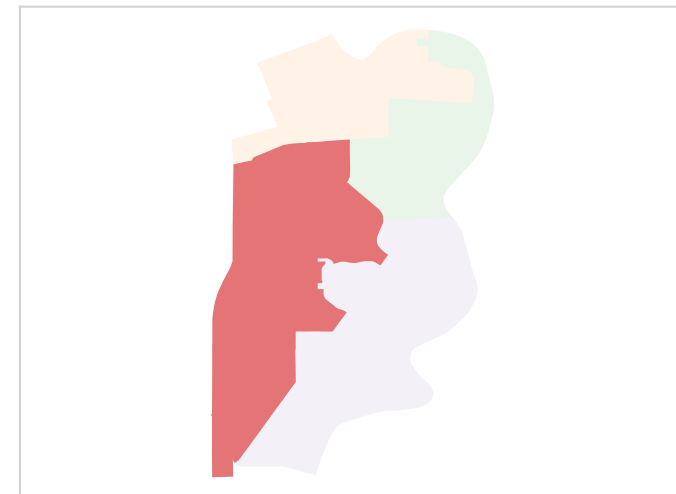
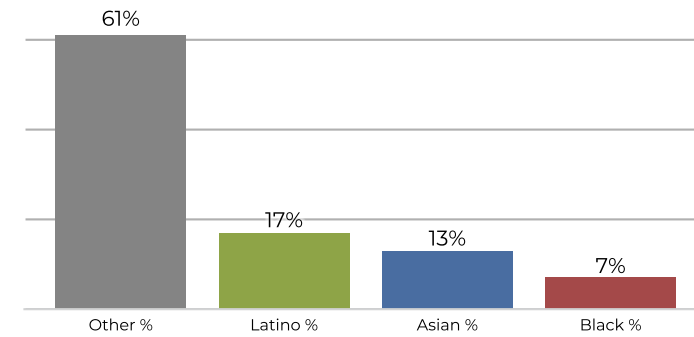
District 3



2020 Census

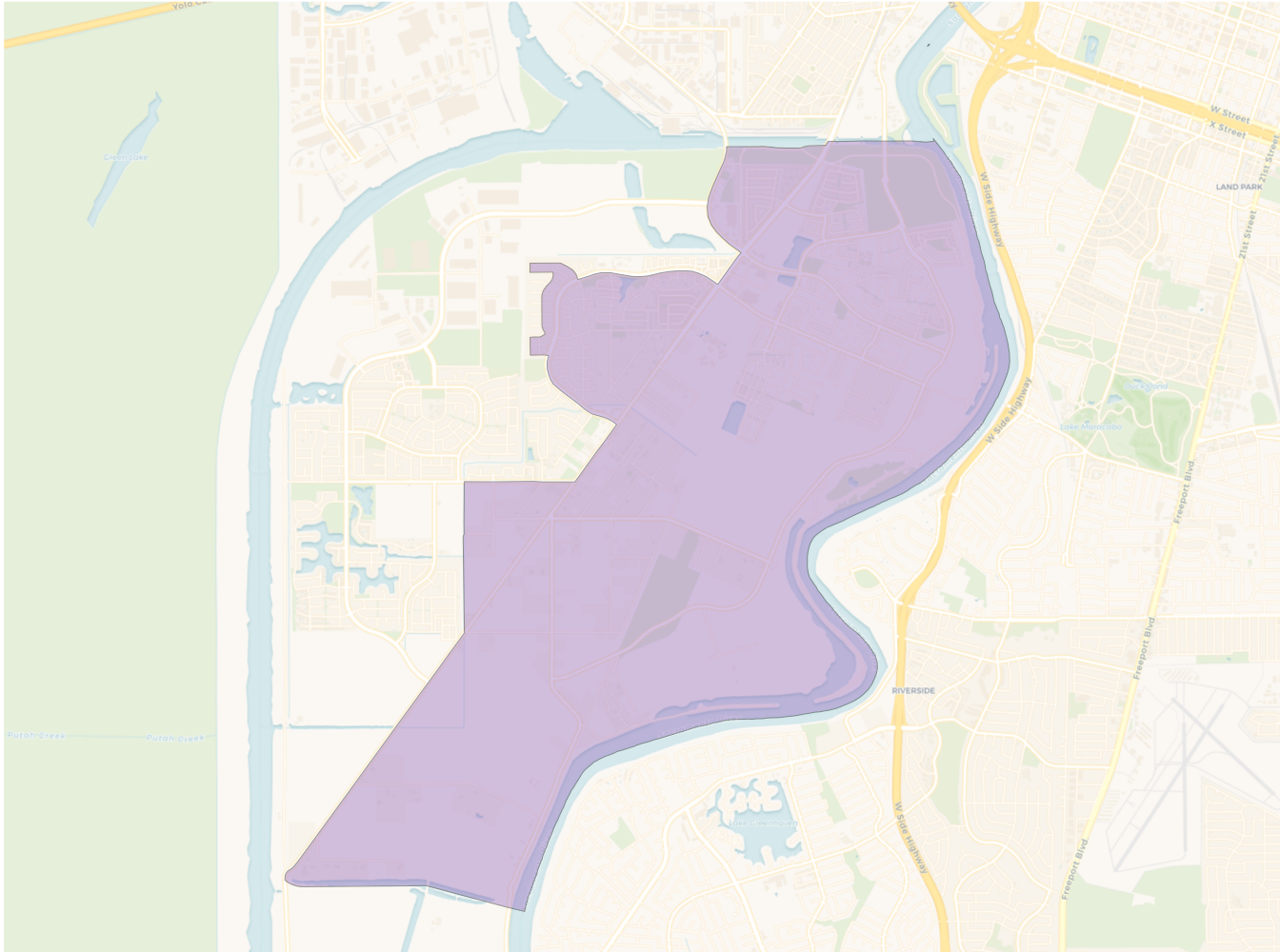


Citizen Voting Age Population

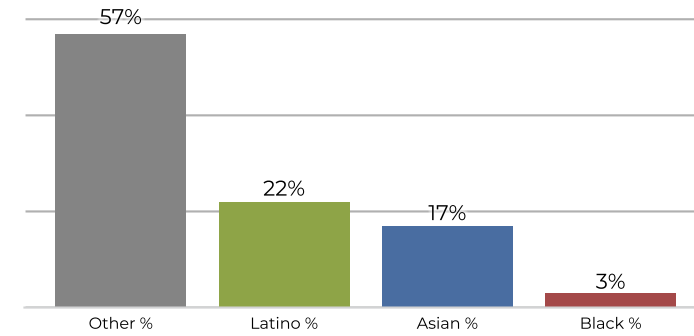


Population	Deviation	Deviation %	Other	Other %	Latino	Latino %	Asian	Asian %	Black	Black %
14,005	486	3.6%	7,134	50.9%	3,426	24.5%	2,523	18.0%	922	6.6%
Total CVAP	Other CVAP	Other CVAP %	Latino CVAP	Latino CVAP %	Asian CVAP	Asian CVAP %	Black CVAP	Black CVAP %		
8,722	5,368	61.5%	1,521	17.4%	1,190	13.6%	643	7.4%		

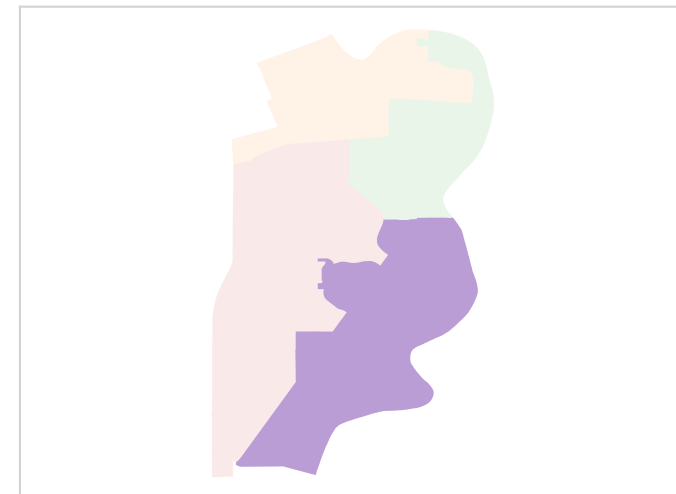
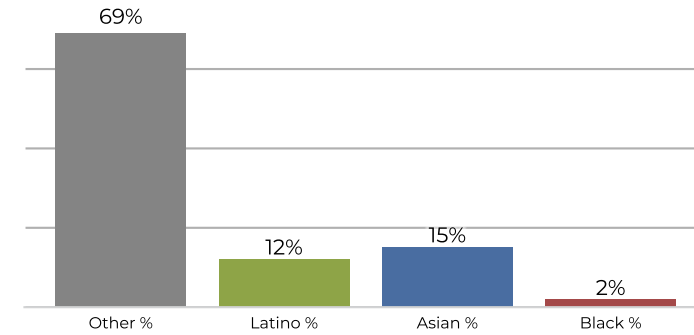
District 4



2020 Census



Citizen Voting Age Population



Population	Deviation	Deviation %	Other	Other %	Latino	Latino %	Asian	Asian %	Black	Black %
12,700	-819	-6.1%	7,236	57.0%	2,842	22.4%	2,203	17.3%	419	3.3%
Total CVAP	Other CVAP	Other CVAP %	Latino CVAP	Latino CVAP %	Asian CVAP	Asian CVAP %	Black CVAP	Black CVAP %		
8,428	5,844	69.3%	1,033	12.3%	1,337	15.9%	214	2.5%		